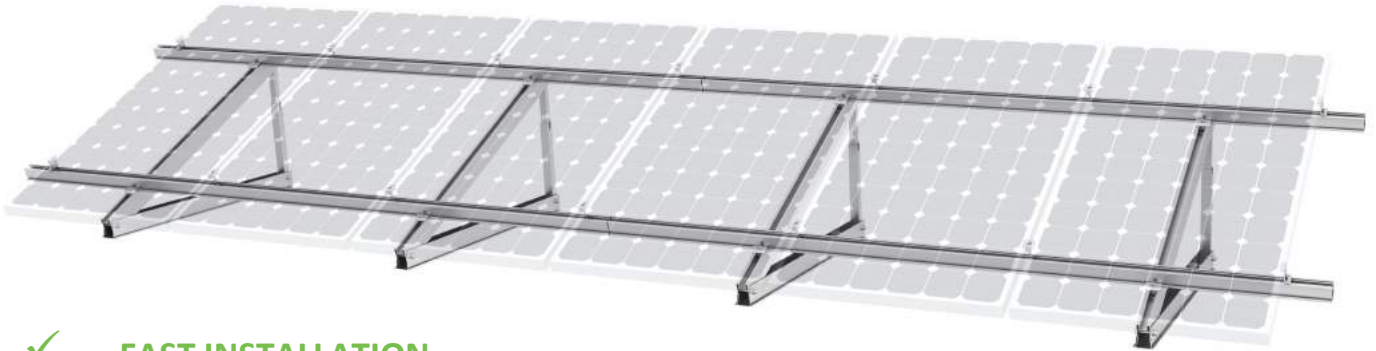


## SOLAR TRIPOD



### FAST INSTALLATION

Pre-assembled Tripod supports simply need to be unfolded and secured to the roof structure or ballast with two fixings. The T55 rail is designed to cover large spans reducing the number of supports required. These features result in a fast easy and cost efficient installation.



### FULLY ADJUSTABLE

Tripod supports tilt angle are fully adjustable from 15 degree to 30 degrees. One unit whichever angle you require.



### CORROSION RESTANT

Tripod supports and components materials are manufactured from stainless steel (SUS304) and AL6005-TS aluminium with 10µm anodisation thus eliminating any corrosive reaction in the harshest of environments.



### HIGH PERFORMANCE

Tripod T55 rail will span up to 2.4 metres at a wind speed of 23mph and maximum snow loading of 0.05 KN/m.



T-55 Rail



15 degree to 30 degrees

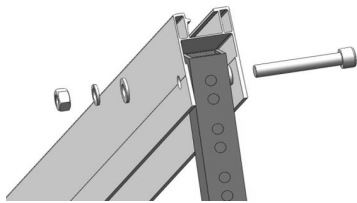
10 Year  
Warrenty

Commercial

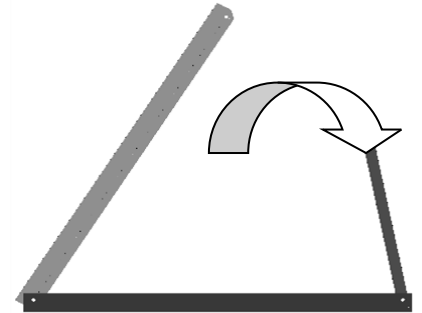
Residential

## SOLAR TRIPOD

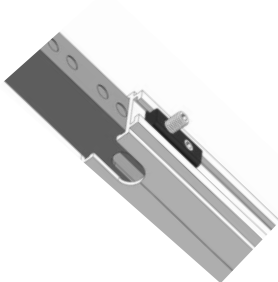
### INSTALLATION GUIDE



Unfold Tripod and pre-drill two holes in base 300mm from either end. Drill 6mm pilot hole into ballast and secure with Bi Met Masonary Anchors Tripod to ballast or directly to roof structure.



Fix the adjustable leg to the upper support with the M10 x 65mm bolt provided.

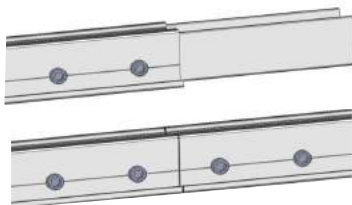


Tighten the grub screws on the adjustable leg to the desired position.

Each positional groove increases the angle by two degrees.



With the T-rail clamps fix two T-55 rails. The lower rail 300mm from the bottom end of the upper support and the top rail 150mm from the bottom end.



Rail end overhang must be no more 50% of the Tripod support spacings.

If the rail is not long enough then join together using the splice for T-rail 55 using two tek screws either side.

Use Clenergy mid and end clamps to fix the solar panels to the rail.

